

# Sailing Instructions BBC Big Boat Challenge DH/IRC Kerteminde Sejlklub / Kerteminde - Denmark 10 – 12 june 2011

## SI , SAILING INSTRUCTIONS

### 1 RULES

1.1 The regatta will be governed by the rules as defined in The Racing Rules of Sailing. The applying prescriptions of the Scandinavian Sailing Association and the Danish Sailing Association has been be incorporated into the sailing instructions.

1.2 The Rules are changed as follows:

- Rule 31 changed. SI 9.4
- Rule 33 and definition af signal S changed. SI 11.2
- Rule 35, A4 og A5 changed. SI 14.1
- Rule 44.1 and 44.2 changed. SI 13.1
- Rule 60.1(a) changed. SI 8.3 and SI 15.5
- Rule 61.1(b) changed. SI 15.4
- Rule 62.1(a) changed. SI 8.2, SI 8.3 and SI 14.2
- Rule 61.3 and 62.2 changed. SI 15.2
- Rule 62.2 changed. SI 15.7
- Rule 66 changed. SI 15.6
- Rule A4 changed. SI 10.3

If there is a conflict between languages the English text will take precedence.

1.3 Danish Handicap DH-2011 rules shall apply for boat using DH. IRC-2011 shall apply for boats using IRC rating. IRC 22.4 shall not apply. There will be no limitations on crew number or weight.

1.4 Advertising

ISAF Regulation 20 - Advertising Code will apply.

On the racecommittees request all boats will be required to display the following:

- Bow numbers.
- Event and sponsor stickers on both sides of the bow (within 20%).
- Event and sponsor flag permanently hoisted on the backstay.
- Class identification flag permanently hoisted on the backstay.
  - BBC-class-1 shall display a white logo-flag in backstay
  - BBC-class-2 shall display a blue logo-flag in backstay

Trac-Trac tracking device handed out to competitors by the race committee, shall be mounted and used according to instructions given by the race committee.

### 2 NOTICES TO COMPETITORS

Notices to competitors will be posted on the official notice board located at the regatta of- fice BBC-bureau.

### 3 CHANGES TO SAILING INSTRUCTIONS

Any change to the sailing instructions will be posted before 08.00 hrs on the day it will take effect, except that any change to the schedule of races will be posted by 20.00 hrs on the day before it will take effect.

### 4 SIGNALS MADE ASHORE

4.1 Signals made ashore will be displayed from the flagpole at the bureau.

- 4.2 When flag AP is displayed ashore, '1 minute' is replaced with 'not less than 60 minutes' in race signal AP.

## 5 SCHEDULE of races

- |     |                  |                 |           |                                                                                                |
|-----|------------------|-----------------|-----------|------------------------------------------------------------------------------------------------|
| 5.1 | Day              | Number of Races | BBC-class | First Warning signal                                                                           |
|     | Saturday 11 june | 3               | all       | 09.55 for BBC-class-1,<br>BBC-class-2 warning signal can<br>be at the BBC-class-1 start signal |
|     | Sunday 12 june   | 2               | all       | 09.55 for BBC-class-1,<br>BBC-class-2 warning signal can<br>be at the BBC-class-1 start signal |
- 5.2 Warning signal for following races for the BBC-classes will be given as soon as reasonable possible after the finishing of the last boat in the same BBC-class.  
No warning signal will be given later than 13.00 on the last day of the regatta.

## 6 CLASS FLAG

Class-flag is pennant 1 for BBC-class-1 and pennant 2 for BBC-class-2.  
The BBC-classes and classification of each competitor is noted in the competitor list.

## 7 RACING AREAS

The Race Area Diagram shows the location of the racing area.  
It is situated east of Kerteminde Bay in the area between Stavrehoved and Risinge.  
Changes in actual location of the racing area will not be grounds for redress.

Sailing to and from the sailing area shall be done in the east-west route directly between Kerteminde Harbour buoys and the YB at Møllegrunden.  
Pay attention to other sailing areas with reference to RRS 23.1.

## 8 THE COURSES

- 8.1 The attached course diagram show the courses, including the approximate angles between legs, the order in which marks are to be passed, and the side on which each mark is to be left.
- 8.2 No later than the warning signal the race committee signal boat can display the approximate compass bearing from the boat to the first mark.  
Failure to display the compass bearing will not be grounds to redress. This changes rule 62.1(a).
- 8.3 No later than the warning signal the race committee signal boat will display a letter corresponding to the TAUD windindex to be used for calculating DH results:  
L : Wind "Light", TAUDL will be used  
M : Wind "Medium", TAUDM will be used  
H : Wind "Heavy", TAUDH will be used

The race committees decision will not be ground for redress by a boat after RRS 60.1 (b) and 62.1 (a).

## 9 MARKS

- 9.1 Mark 1 and 1a will be red inflated buoys.  
Mark 2 and 2a will be yellow inflated buoys.  
Mark 3s and 3p will be orange inflated buoys.
- 9.2 New marks, as provided in instruction 11.1, will be staffbuoy or boat with signalflag M.
- 9.3 Starting marks is a yellow inflated mark and the starting vessel.
- 9.4 A orange inflated bouy will be placed near the starting vessel as a restriction mark.  
The restriction mark is not a part of the starting line.

After a boats preparatory signal, no part of the boat is allowed to be inside or on the triangle formed by the restriction mark and the bow/stern of the starting vessel.  
If a boat brakes this rule she must take a 1 turn penalty plus penalties as per RRS 44.1 if applicable. To start correctly a boat must sail from the pre-start side of the starting line respecting the restricted area.

9.5 Finish marks will be staffs displaying red flag.

## **10 THE START**

10.1 Races will be started by using RRS 26.

10.2 The starting line is between a yellow inflated mark and a yellow flag on the starting vessel.

10.3 A boat starting later than 4 minutes after her starting signal will be scored Did Not Start without a hearing. This changes rule A4

10.4 If any part of a boat, crew or equipment is at the course side of the starting line within the last 2 minutes before its startsignal, the race committee can display signalflag V. It will be displayed until all boats are on the starting side of the line.  
Omissions in display of signalflag V will not be grounds for a protest or redress by a boat.

## **11 CHANGE OF THE POSITION OF THE NEXT MARK**

11.1 To change the position of the next mark, the race committee will move the original mark (or the finishing line) to a new position or lay a new mark and remove the original mark as soon as practicable.

11.2 If a change of course is signalled with signal flags C and S near mark 1a or 2a, it means: "sail directly to the finish after rounding mark 1a or 2a". This is a changes to RRS 33 and the definition of race signal S.

## **12 THE FINISH**

The finishing line will be between the finishing marks.

## **13 PENALTY SYSTEM**

13.1 Rules 44.1 and 44.2 are changed so that only one turn, including one tack and one gybe, is required.

## **14 TIME LIMITS**

14.1 Boats failing to finish within 30 minutes after the first boat in its class sails the course and finishes, will be scored Did Not Finish without a hearing. This changes rules 35 and A4 and A5.

14.2 Target time for the first boat to finish will be 60 minutes. Failure to meet the target time will not be grounds for redress. This changes rule 62.1(a).

## **15 PROTESTS AND REQUESTS FOR REDRESS**

15.1 Protest forms are available at the race office. Protests shall be returned there within the protest time limit

15.2 For each class, the protest time limit is 90 minutes after the last boat has finished the last race of the day. The same time limit applies to protests by the race committee and protest committee and to requests for redress. This changes rules 61.3 and 62.2.

15.3 Notices will be posted within 30 minutes of the protest time limit to inform competitors of hearings in which they are parties or named as witnesses. The notices will include the scheduled starting time of the hearings.  
Hearings will be held in the jury office.

- 15.4 Notices about protests from race committee or protest committee will be posted to inform the boats as required by RRS 61.1(b).
- 15.5 Breaches of instructions 7, 9.4, 17, 20, 22, 23, 24 and 25 will not be grounds for a protest by a boat. This changes rule 60.1(a). Penalties for these breaches may be less than disqualification if the protest committee so decides. The penalty is identified as DPI.
- 15.6 On the last day of the regatta a request for reopening a hearing shall be delivered
- (a) within the protest time limit if the party requesting reopening was informed of the decision on the previous day;
  - (b) no later than 30 minutes after the party requesting reopening was informed of the decision on that day.
- This changes rule 66.
- 15.7 On the last day of the regatta a request for redress based on a decision from the protest committee shall be delivered no later than 30 minutes after the decision was announced. This changes rule 62.2.

## **16 SCORING**

- 16.1 The Low Point System of Appendix A will apply.  
Result is calculated for each of the 2 BBC-classes divided in IRC-fleet and DH-fleet.  
A boats result is calculated after corrected sailingtime using IRC-2011 TCC or DH-TAUD signaled in SI 8.3.
- 16.2 1 race is required to form a serie.
- 16.3 (a) When fewer than 5 races have been completed, a boat's series score will be the total of her race scores.  
(b) When 5 races have been completed, a boat's series score will be the total of her race scores excluding her worst score

## **17 SAFETY REGULATIONS**

A boat that retires from a race shall notify the race committee as soon as possible and if possible display her national flag.  
Danish legislation requires every boat to be equipped with personal buoyancy for the number of persons on board at any time.

## **18 REPLACEMENT OF CREW OR EQUIPMENT**

- 18.1 Substitution of competitors will not be allowed without prior written approval of the race committee.
- 18.2 Substitution of damaged or lost equipment will not be allowed unless authorized by the race committee. Requests for substitution shall be made to the committee at the first reasonable opportunity.

## **19 EQUIPMENT AND MEASUREMENT CHECKS**

A boat or equipment may be inspected at any time for compliance with the DH-2011 or IRC-2011 rules and sailing instructions. On the water, a boat can be instructed by the race committee to proceed immediately to a designated area for inspection.

## **20 ADVERTIZING**

Boats shall display advertising material as decided and delivered by organizing authority.

## **21 OFFICIAL BOATS**

The official boats will display the event burgee in yellow or green.  
The starting/finish vessel will display the organizing clubs burgee (Kerteminde Sejlklub).  
Protest committee boat will display a signalflag J.

## **22 SUPPORT BOATS**

- 22.1 Team leaders, coaches and other support personnel shall stay at least 50 meters from any racing boat.
- 22.2 Support boats shall be registered in bureau with information about contact phonenumber (mobile) to be used by race committee during race.

## **23 HAUL-OUT RESTRICTIONS**

Boats shall not be hauled out during the regatta from 08.00 hrs. on the first racing day until the last boat finishes the last race, except with and according to the terms of prior written permission of the race committee.

## **24 DIVING EQUIPMENT AND PLASTIC POOLS**

Underwater breathing apparatus and plastic pools or their equivalent shall not be used around the boats from 08.00 hrs. on the first racing day until the last boat finishes the last race, except with and according to the terms of prior written permission of the race committee.

## **25 RADIO COMMUNICATION**

A boat shall neither make radio transmissions while racing nor receive radio communications with race-related information not available to all boats, unless the communication is initiated by the race committee. This restriction also applies to mobile telephones.

## **26 PRIZES**

Prizes will be given to every 5 starting boats in each BBC-class and its rating division. There can be four prizegiving scores: DH-class1, DH-class2, IRC-class1 and IRC-class2. Prizes will be given according to result as known at the ceremony.

## **27 DISCLAIMER OF LIABILITY**

Competitors participate in the regatta entirely at their own risk. (See rule 4, Decision to Race.) The organizing authority will not accept any liability for material damage or personal injury or death sustained in conjunction with or prior to, during, or after the regatta.

## **28 INSURANCE**

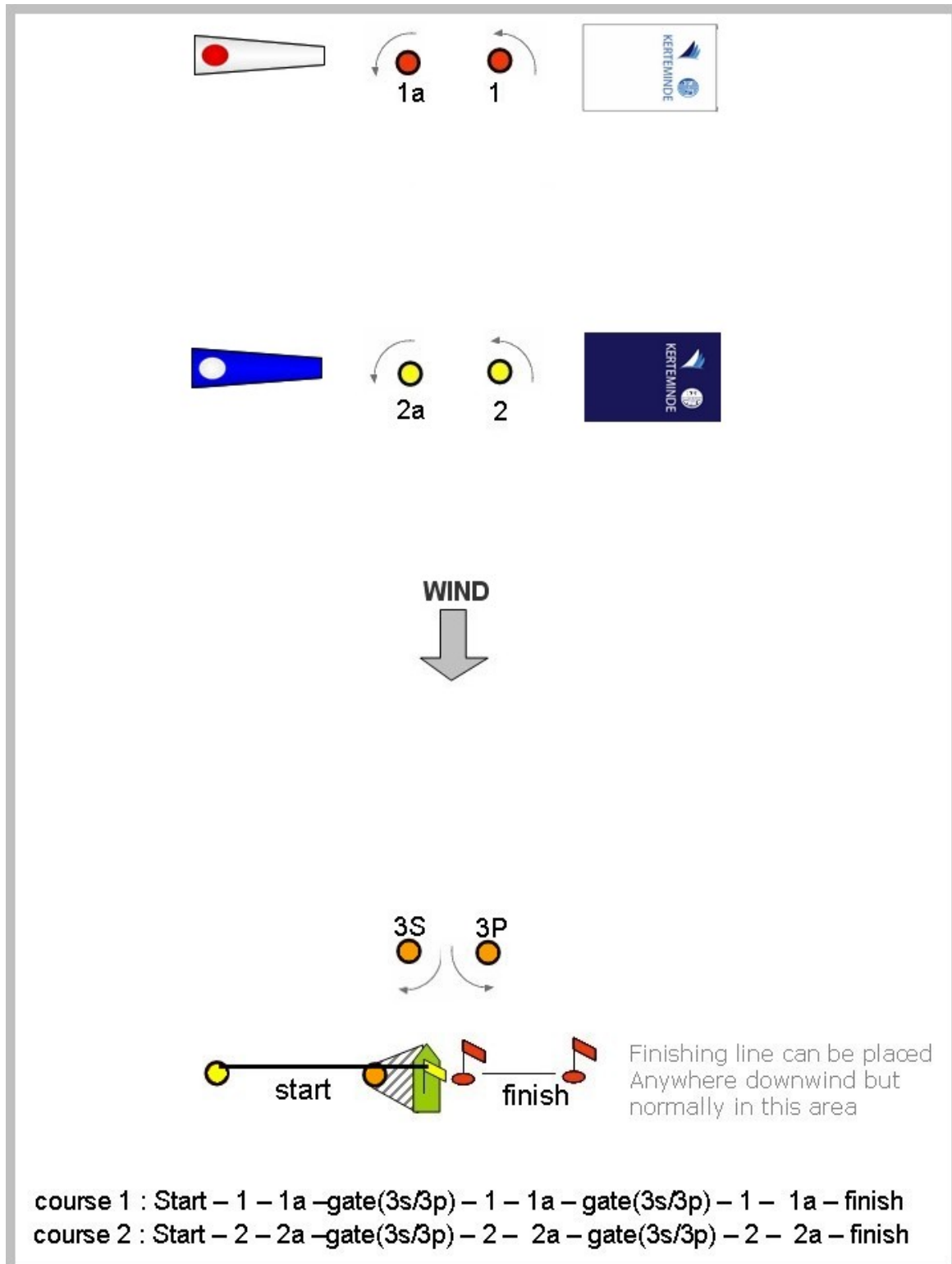
Each participating boat shall be insured with valid third-party liability insurance with a minimum cover of DKK 10.000.000 for persons and 2.000.000 for material damages per event or the equivalent.

***Information about insurance police and company given at registration is the confirmation of validity of insurance as required.***

***A owner-signed accept is required if the boatowner not is onboard during race, and shall be presented at registration.***

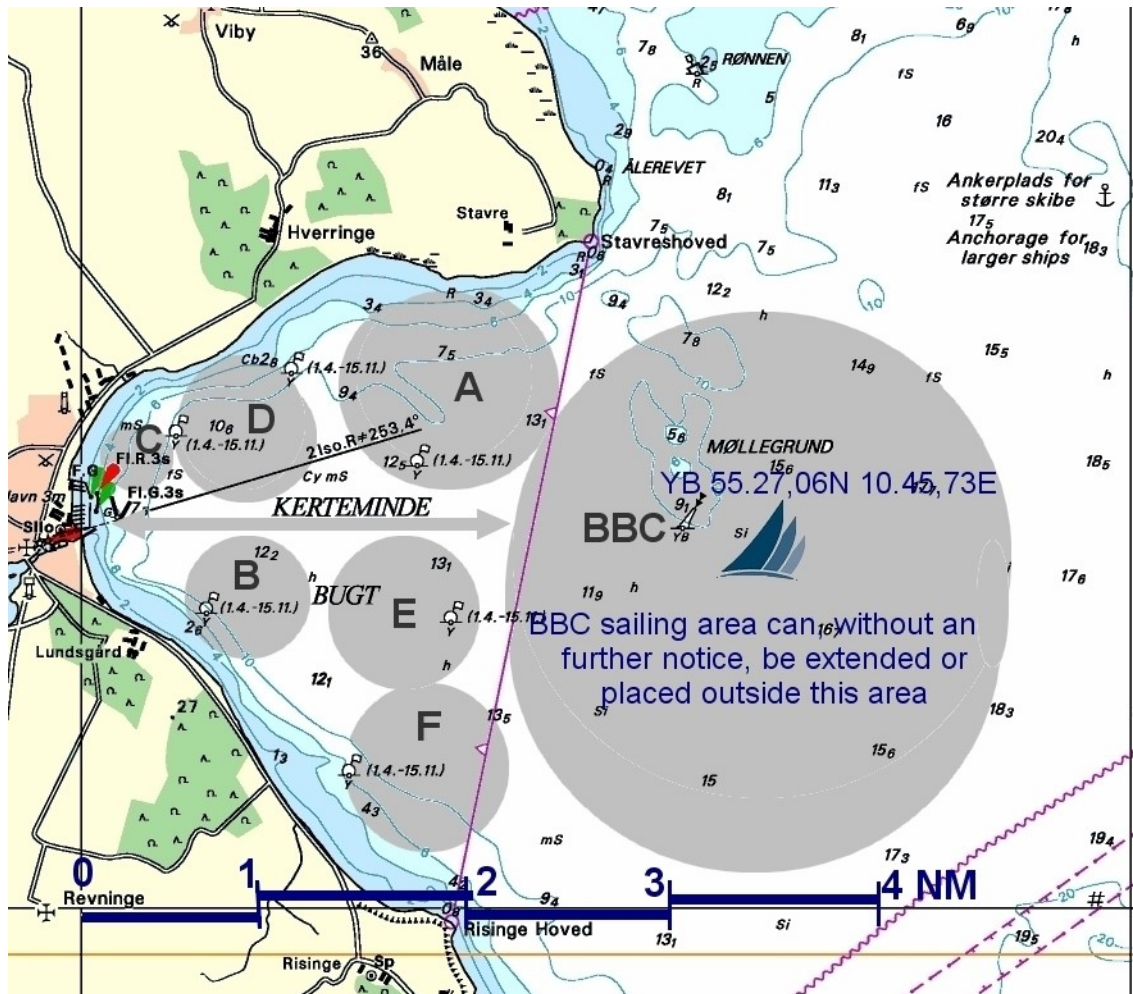
## **29 NATIONS FLAG**

A racing boat shall not display the nation's flag.

**Course diagram:**

- Marks 1 and 1a for course 1 shall be left to portside
- Marks 2 and 2a for course 2 shall be left to portside

## Race Area:



At the same time as the "Big Boat Challenge" regatta, Kerteminde Sejlklub organizes "Sail Extreme" for young sailors and small boats. The participants in Big Boat Challenge shall use the route marked by a arrow line when sailing to and from their race area (SI-7).

Please be aware of the traffic to and from the marked course areas and be careful if dinghies is crossing the route. If possible, the SailExtreme boats will avoid crossing the route between the red and green buoys and the harbor entrance.

Race Area Sail Extreme	Boat Classes
A	Optimist A
B	Optimist B + Silver, Feva, 405
C	Optimist C
D	29er, 29er XX, 49er, Formula, Kona, RS:X
E	Europe, Laser, Zoom 8
F	A-Cat, Contender, Yngling